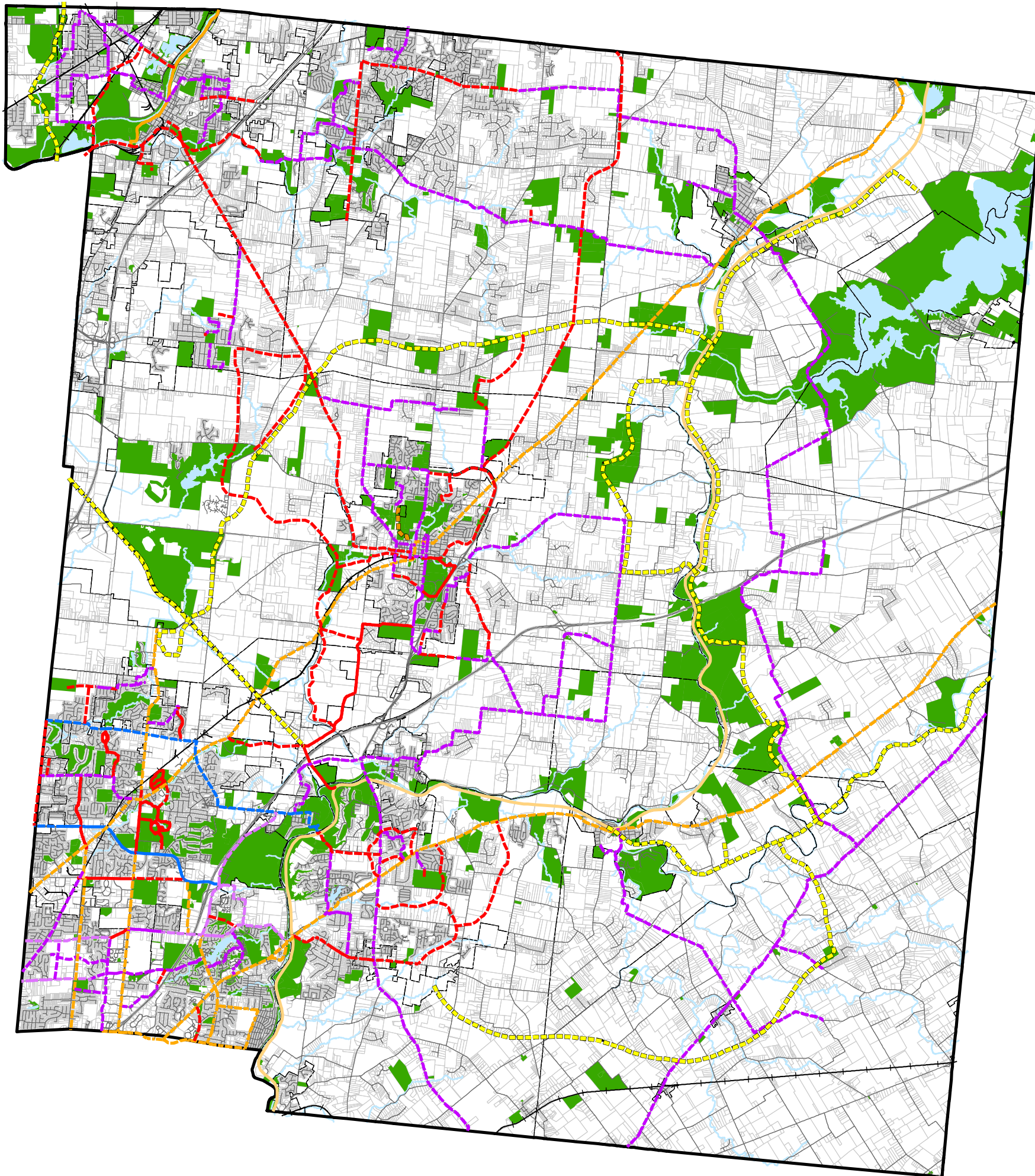


Warren County Multi-Use Trails Master Plan



Trails Types And Status

- Miami to Miami, Seperate, Complete
 - - - Miami to Miami, Seperate, Proposed
 - Miami to Miami, Shared, Complete
 - - - Miami to Miami, Shared, Proposed
 - - - Equestrian, Seperate, Proposed
 - - - Hiking Trail, Seperate, Proposed
 - Local Path, Seperate, Complete
 - - - Local Path, Seperate, Proposed
 - Local Path, Shared, Complete
 - - - Local Path, Shared, Proposed
 - Regional Path, Seperate, Complete
 - Regional Path, Shared, Complete
 - - - Regional Path, Shared, Proposed
-
- County Boundary
 - - - Local Jurisdictions Boundaries
 - + + + Railways
 - Existing Public Roads
 - Lakes & Ponds
 - Rivers, Creeks & Streams
 - Parks, Open Spaces & Recreation Facilities - Existing & Proposed
 - Parcel Boundaries



0 6,000 12,000 24,000 36,000 48,000 Feet

Scale: 1 Inch = 12,000 Feet

